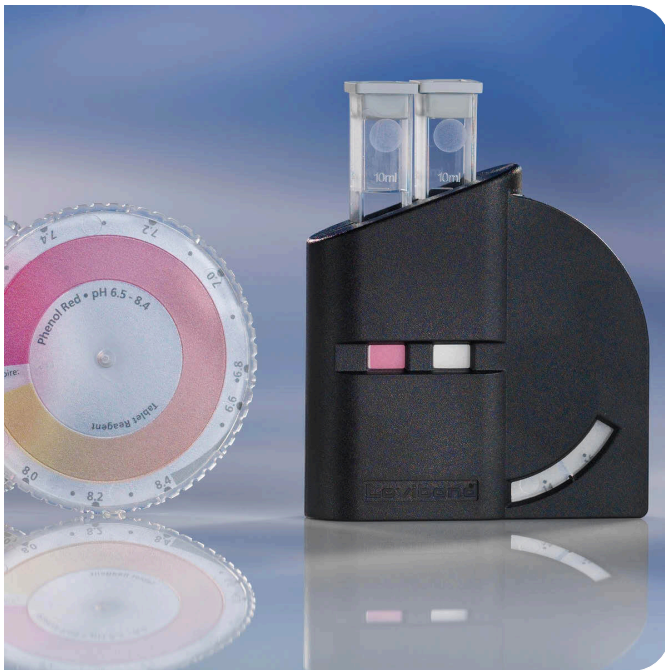


# Lovibond® Water Testing Tintometer® Group



## CHECKIT® Comparator Test Kit Chlorine DPD, 0.02-0.3 mg/L Cl<sub>2</sub>

Testing with the color disc in many applications



- Supplied field-ready in a carrying case with reagents and accessories for 30 tests
- Wide range of parameters for a variety of applications
- Color discs have a continuous color gradient making it possible to achieve a direct color match - no need to extrapolate the result between two color standards

Part Number: 147000

### Step-By-Step Instructions

Multi-lingual instructions provide an illustrated step-by-step explanation of how to conduct the test - ensuring that even "non-chemists" can achieve reliable and accurate measurements quickly.

### Wide Variety of Parameters

Many parameters have multiple testing ranges and methods available. Additional testing parameters can be added by purchasing additional discs and reagents - utilize the same comparator housing for all of your test.

### One Piece Comparator Housing

The rugged design of the one-piece comparator housing has no "moving pieces" that can become lost or broken. Simply slip the color disc into the housing until it clicks into place and you're ready to test. Test results are easily viewed in the results window.

### Easy to View Results

The Diffuser Panel on the backside of the CHECKIT® Comparator housing helps to disperse light evenly among the sample and the blank tube. This makes it easier to achieve an accurate color match and helps the user visually compensate for turbidity in the sample.

### Continuous Color Gradient

Color discs have a continuous color gradient making it possible to achieve a direct color match - no need to extrapolate the result between two color standards.

### Industry

Chemical Industry | Food and Beverage Industry | Industries Others | Marine Industry | Municipalities | NGO | Oil and Gas | Pharmaceutical Industry | Power and Energy

### Application

Disinfection Control | Waste Water Treatment

### CHECKIT® Comparator Test Kit Chlorine DPD, 0.02-0.3 mg/L Cl<sub>2</sub>

CHECKIT® Comparator Test Kits are accurate, easy to use test kits for water analysis. Simply add the reagent to the sample cell, rotate the disc until the color matches the prepared water sample and read the concentration value.

### Measuring Range

Test Name	Measuring Range	Chemical Method
Chlorine D55 T	0.02 - 0.3 mg/L Cl <sub>2</sub>	DPD

# Delivery Scope

- CHECKIT® Comparator D 55 with mirror optics
- CHECKIT® Disc Chlorine DPD
- 30 tablet reagents DPD No.1
- 30 tablet reagents DPD No.3 Evo
- 2 plastic cuvettes 10 ml with lid
- Plastic stirring rod, length 10 cm
- Instruction manual
- Warranty information
- in case

## Accessories

Title	Part Number
Plastic cell, 13,5 mm path length, with grey lid, set of 10	145500
Plastic cell, 13,5 mm path length, with grey lid, set of 5	145505
Plastic cell, 13,5 mm path length, with grey lid, set of 100	145510
Cuvette stand for 10 round cuvettes Ø 16 mm	418957

### Tintometer GmbH

Lovibond® Water Testing  
Schleefstraße 8-12  
44287 Dortmund  
Tel.: +49 (0)231/94510-0  
sales@lovibond.com  
www.lovibond.com  
Germany

### The Tintometer Limited

Lovibond House  
Sun Rise Way  
Amesbury, SP4 7GR  
Tel.: +44 (0)1980 664800  
Fax: +44 (0)1980 625412  
sales@lovibond.uk  
www.lovibond.com  
UK

### Tintometer China

9F, SOHO II C.  
No.9 Guanghualu,  
Chaoyang District,  
Beijing, 100020  
Customer Care China Tel.: 4009021628  
Tel.: +86 10 85251111 Ext. 330  
Fax: +86 10 85251001  
chinaoffice@tintometer.com  
www.lovibond.com  
China

### Tintometer South East Asia

Unit B-3-12, BBT One Boulevard,  
Lebu Nilam 2, Bandar Bukit Tinggi,  
Klang, 41200, Selangor D.E  
Tel.: +60 (0)3 3325 2285/6  
Fax: +60 (0)3 3325 2287  
lovibond.asia@tintometer.com  
www.lovibond.com  
Malaysia

### Tintometer Brazil

Caixa Postal: 271  
CEP: 13201-970  
Jundiaí – SP  
Tel.: +55 (11) 3230-6410  
sales@lovibond.us  
www.lovibond.com.br  
Brazil

### Tintometer Inc.

6456 Parkland Drive  
Sarasota, FL 34243  
Tel: 941.756.6410  
Fax: 941.727.9654  
sales@lovibond.us  
www.lovibond.us  
USA

### Tintometer India Pvt. Ltd.

Door No: 7-2-C-14, 2<sup>nd</sup>, 3<sup>rd</sup> & 4<sup>th</sup> Floor  
Sanathnagar Industrial Estate,  
Hyderabad, 500018  
Telangana  
Tel: +91 (0) 40 23883300  
Toll Free: 1 800 599 3891/ 3892  
indiaoffice@lovibond.in  
www.lovibondwater.in  
India

### Tintometer Spain

Postbox: 24047  
08080 Barcelona  
Tel.: +34 661 606 770  
sales@tintometer.es  
www.lovibond.com  
Spain

Technical changes without notice

Printed in Germany

Lovibond® and Tintometer® are Trademarks of the Tintometer Group of Companies